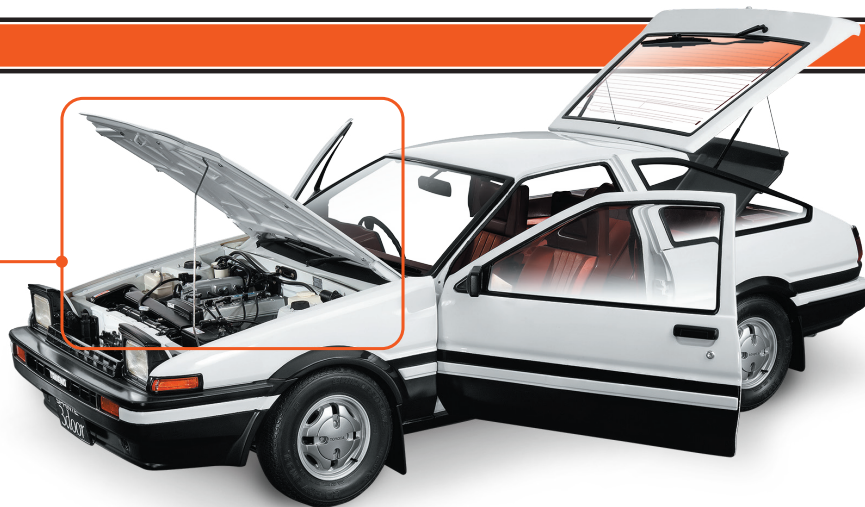
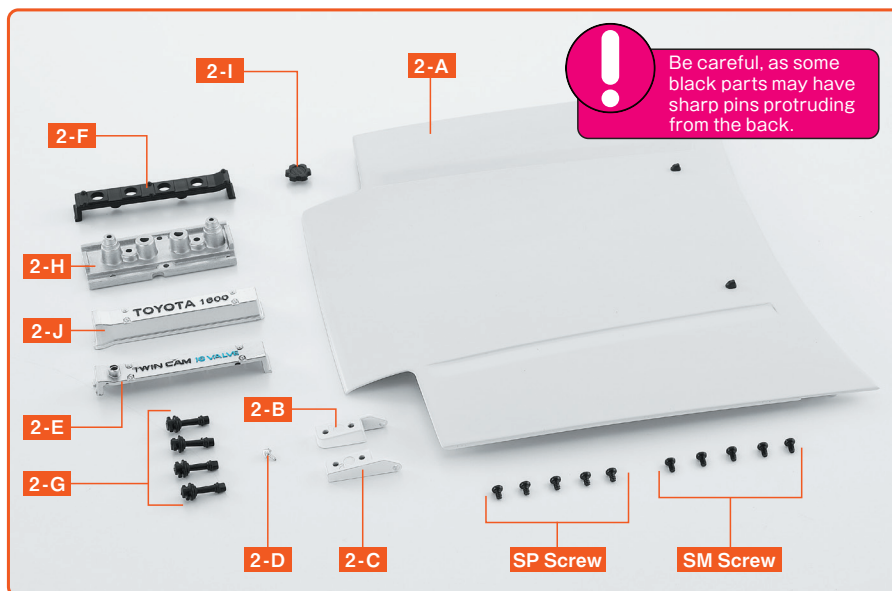


Issue 2

After attaching the hood hinges, proceed to the engine assembly steps. First, finish the top surface of the Cylinder Head Cover.



Assemble the Hood and Cylinder Head Cover



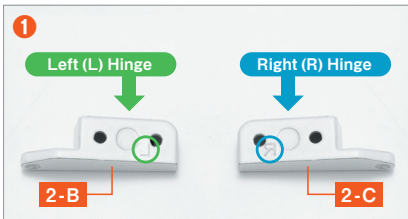
※ In this guide "Left" or "(L)", and "Right" or "(R)", refer to the direction as viewed from the driver's seat.

2-A	Hood
2-B	Hood Hinge (L)
2-C	Hood Hinge (R)
2-D	Hose Connector
2-E	Cylinder Head Cover (L)
2-F	Spark Plug Cover
2-G	Spark Plug Cable Cap×4
2-H	Cylinder Head Cover Mount
2-I	Oil Cap
2-J	Cylinder Head Cover (R)
SP Screw	(1.7×3mm)×5 (1Spare)
SM Screw	(1.7×3mm)×5 (1Spare)

View the follow-along video

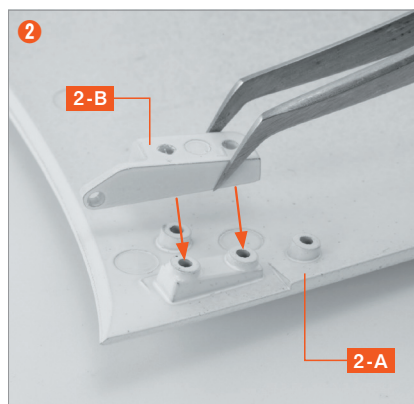


step 1 Attach the Left and Right Hood Hinges to the Hood

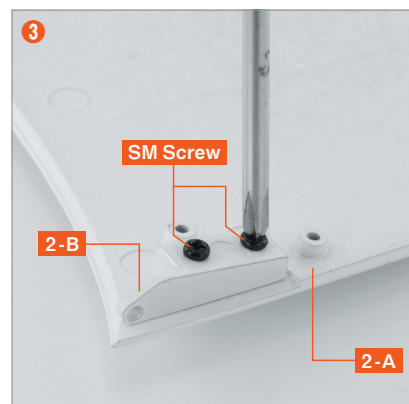


First, prepare the two hood hinges, **2-B** and **2-C**, and check their left/right orientation by looking at the marks in the circled positions in the photo. Attach **2-B** with the "L" mark to the left, and **2-C** with the "R" mark to the right.

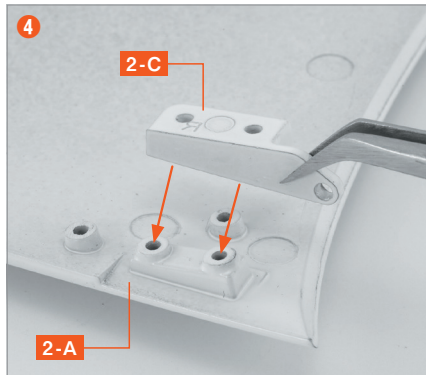
※ The "L" on 2-B and the "R" on 2-C appear as reversed text on the back, but this does not affect assembly.



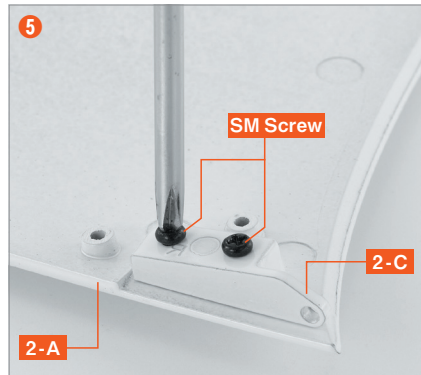
Turn **Hood 2-A** upside down and align the **Hood Hinge (L) 2-B** with the screw holes in the positions as shown.



Once **2-B** is aligned, secure it at the two positions with **SM screws**. Use the screwdriver included in Issue 1.



Similarly, align the right hood hinge **2-C** with the mounting position on the right side of the hood.



As in step **3**, secure it at the two positions with **SM screws**. Store the hood with attached hinges carefully to prevent scratches or damage, until it's required at a later issue.



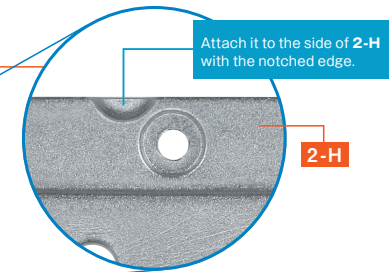
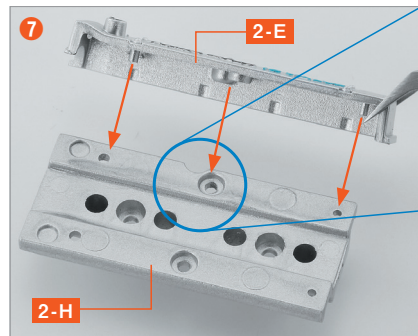
Storing the Hood

The hood assembled in step **1** needs to be stored safely until it is required for the next assembly steps. Since the body panel parts of this model are made of metal, they are relatively heavy and have a large painted surface. Therefore, contact with other metal parts, screws, or tools can easily scratch the painted surface. When storing the hood, wrap it in cushioning material or cloth, or place it in a thick plastic bag for protection.

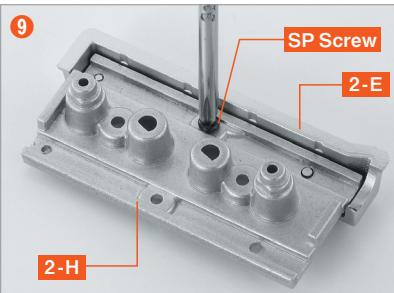
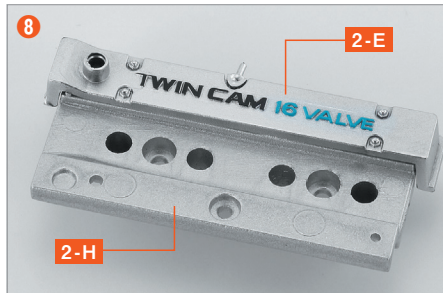
step 2 Assemble the Cylinder Head Cover



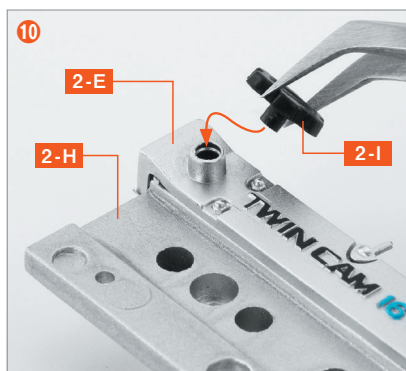
Insert the projection of the **Hose Connector 2-D** into the central hole of the Cylinder Head Cover (L) **2-E**, making sure it faces the direction as shown.



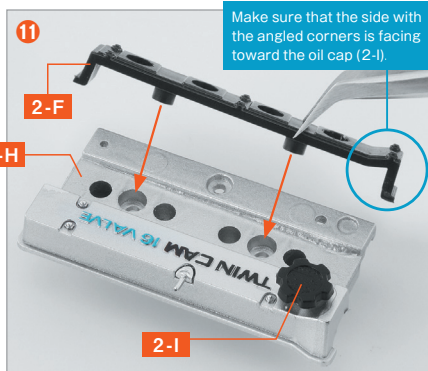
Place the **Cylinder Head Cover Mount 2-H** front side up. Align the three projections under **2-E** with the central recess and the two holes of **2H**. Press together to fit.



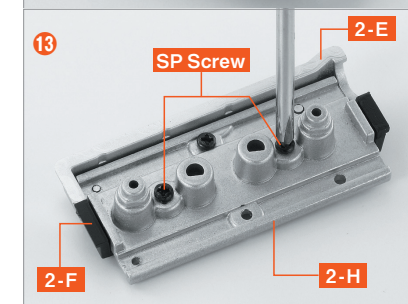
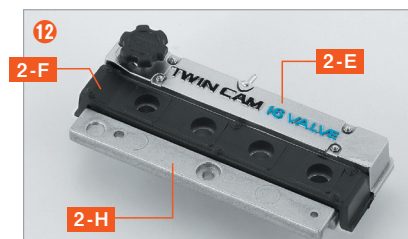
Once **2-E** is properly aligned with **2-H** as shown in photo **8**, turn the entire assembly over. Insert an **SP screw** into the central screw hole and tighten it with the screwdriver to secure.



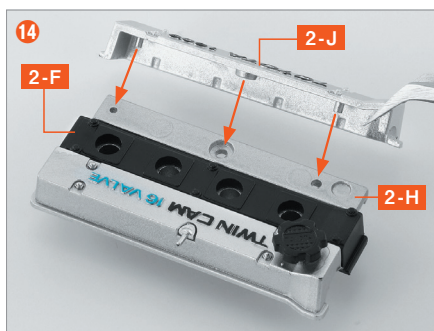
Turn the screwed assembly **9** face up, and press the **Oil Cap 2-I** into the hole on **2-E** at the position shown in the photo to fix it in place.



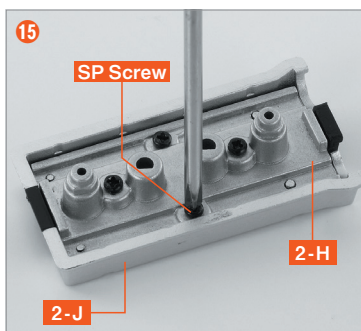
Hold the **Plug Head Cover 2-F** in the orientation shown in the photo, and align the pins on its underside with the holes in the **Cylinder Head Cover Mount 2-H**.



Once **2-F** is aligned as shown in photo **12** turn the entire assembly over, and fasten it at the two positions indicated in photo **13** using **SP screws**.



Align the pins on the back of the **Cylinder Head Cover (R) 2-J** with the holes in **2-H** and press them into place.



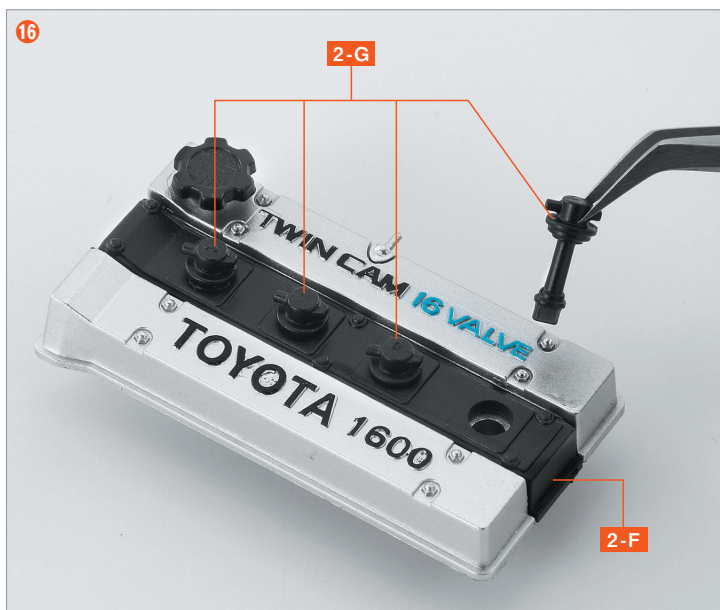
Turn the entire assembly from Step 14 over, and secure it at the positions shown using **SP screws**.



step 3 Securing the Spark Plug Cable Cap



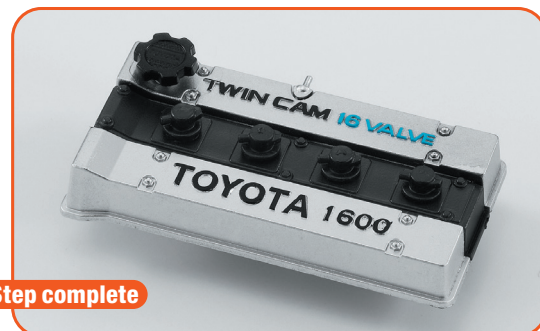
Pay attention to the orientation of the four heads on the Spark Plug Cable Cap **2-G**. Install it so that it matches the arrangement shown in the photo below.



Insert and secure the four **Plug Cable Heads 2-G** into the four holes of the **Plug Head Cover 2-F** at the center of the cylinder head cover assembled in step 15.



Step complete



Complete

The assembly for Issue 2 is now complete. The hood hinges have been attached, and the heart of the AE86 Trueno, the cylinder head cover of the 4A-GEU engine, has been assembled. In Issue 3, we will assemble the left front wheel and the cylinder head.

